



# Smithers Secondary School: Question & Answer

First Day ½ day

**Grade 8s & 9s only**

Schedule

Collect Fees

Locks/ Lockers

Tour to find classrooms

Assembly



# Schedule

Time	Monday	Tuesday	Wednesday	Thursday	Friday
8:43 am - 10:07 am	(82 min blocks) 1-A	1-B	1-A	(67 minutes / class A, B, C) 1-B 8:43 am - 9:50 am	1-A
10:10 am - 11:32 am	2-A	2-B	2-A	2-B 9:55 am - 11:02 am	2-A
<b>Break 11:32 am - 11:45 am)</b>	<b>Break</b>	<b>Break</b>	<b>Break</b>	<b>Break 11:02 am - 11:15 am)</b>	<b>Break</b>
11:45 am - 1:07 pm	3-A	3-B	3-A	3-B 11:15 am - 12:22 pm	3-A
<b>Lunch 1:07 pm - 1:48 pm)</b>	<b>Lunch</b>	<b>Lunch</b>	<b>Lunch</b>	<b>Lunch 12:22 pm - 1:02 pm)</b>	<b>Lunch</b>
1:48 pm - 3:10 pm	4-A	4-B	4-A	(68 minutes) 4-B 1:02 pm - 2:12 pm	4-A

# Extracurricular Activities

Soccer ( Fall / Spring)

Cross Country Running

Wrestling

Volleyball

Basketball

Ski and Snowboard team

Racket and Rock Climbing

Track and Field

Golf Team

Mountain bike team

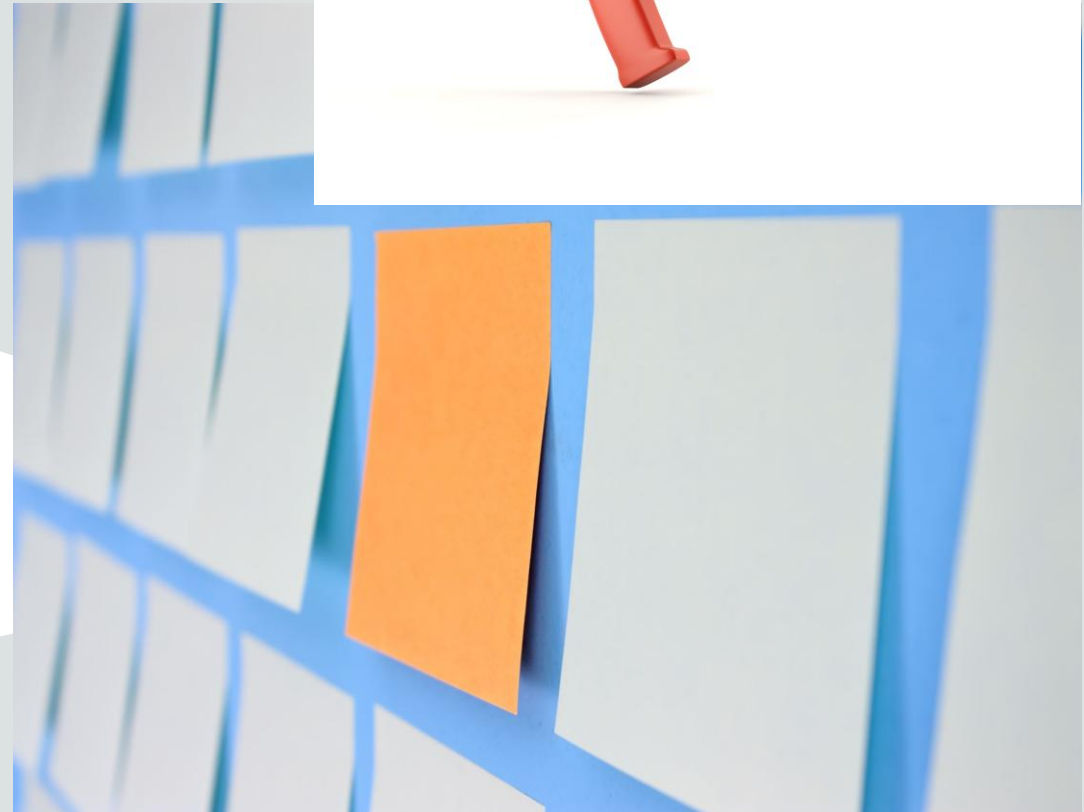
Student leadership

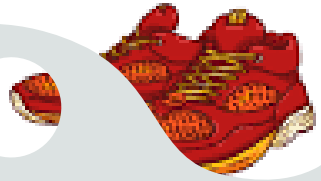
S.T.A.T.E. -Social Justice Focused club

Rainbow Alliance

S.S.S - Environmental focused club

Improv club





# Supplies

Each Teacher will give specifics



# Lunch hour

Grub Hub

Pizza Days

Monday/ Thursday

\$ 3 / slice

